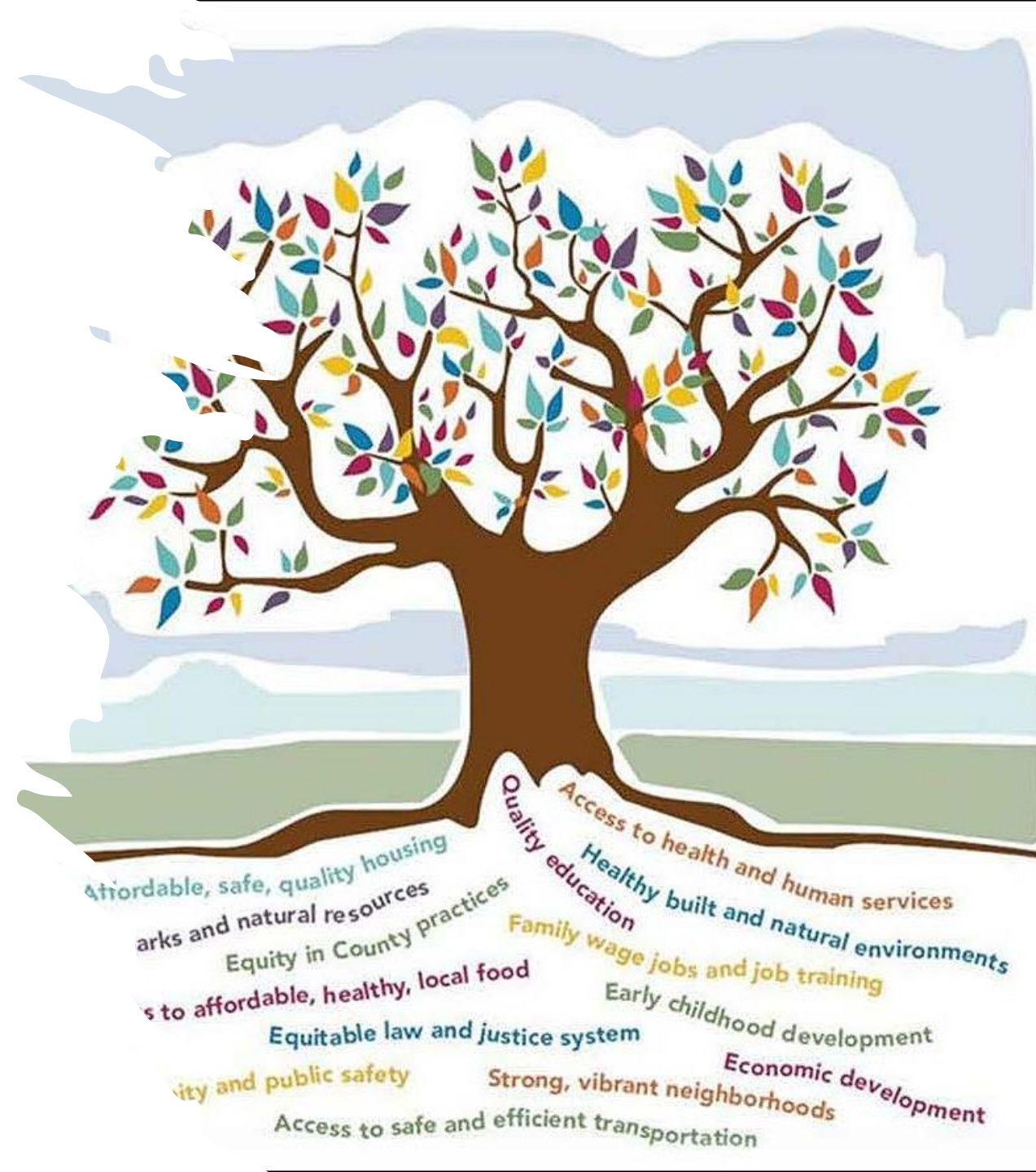


Strategic Plan: Community engagement to address Social Determinants of Health

Increase and strengthen community engagement, including residents most impacted by health inequities, to collectively address the Social Determinants of Health (SDoH) through policy, systems, and environmental changes.



Understand how SDoH impacts the community to guide our programmatic work.

- Clarify the purpose and function of councils that guide (or inform) ACHD's SDoH initiatives
- Create a guide/framework/plan for addressing the five domains of SDoH (internal)
- Programmatic work is accountable for making positive changes to SDoH - especially among those most impacted
- Increase staff knowledge of issues related to SDoH



A Force for Health Justice

Develop ACHD processes to strengthen strategic community engagement that impact SDoH

- Develop an ACHD Community Engagement Plan that seeks authentic engagement of residents most impacted by health inequities
- Develop metrics to include in CPAS that measure community engagement that impacts SDoH
 - Establish ways to evaluate SDoH within community partners (current and future work)
- Develop a Community Health Worker (CHW) program to provide culturally-relevant services that resonate with various audiences.



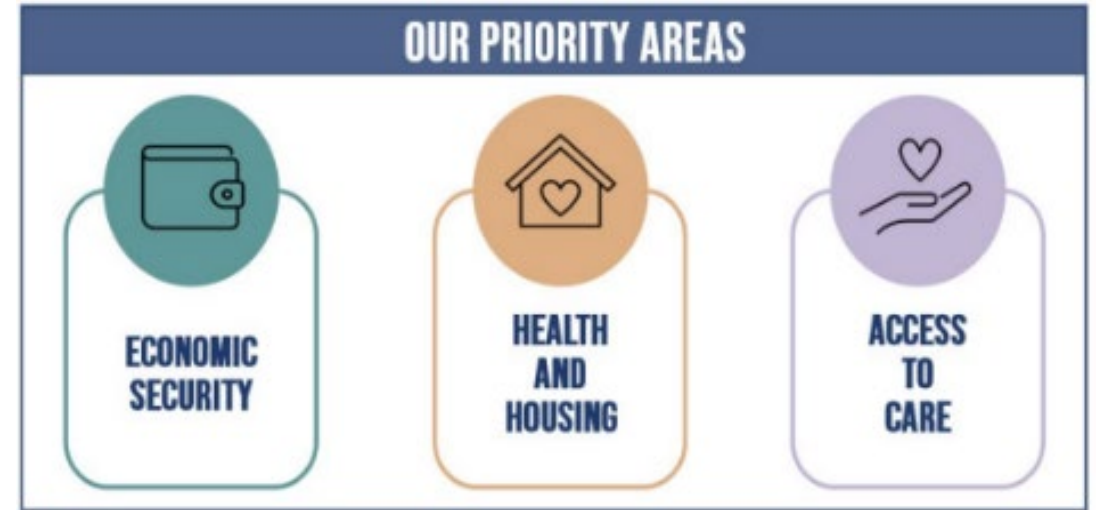
Ensure SDoH are addressed within existing and future health department systems and tools.

- Incorporate SDoH screening tool into routine operations and programmatic work
- Enhance SDoH and Partnership workforce trainings (Tabletops/Exercises and train the trainer courses) for ACHD staff
- Develop novel and meaningful data measures to best describe SDoH impacts on population health
- Implement an internal/programmatic centralized referral process for client-facing services, increasing the number of successful customer-focused connections
- Foster a health care workforce able to address current and emerging needs related to SDOH



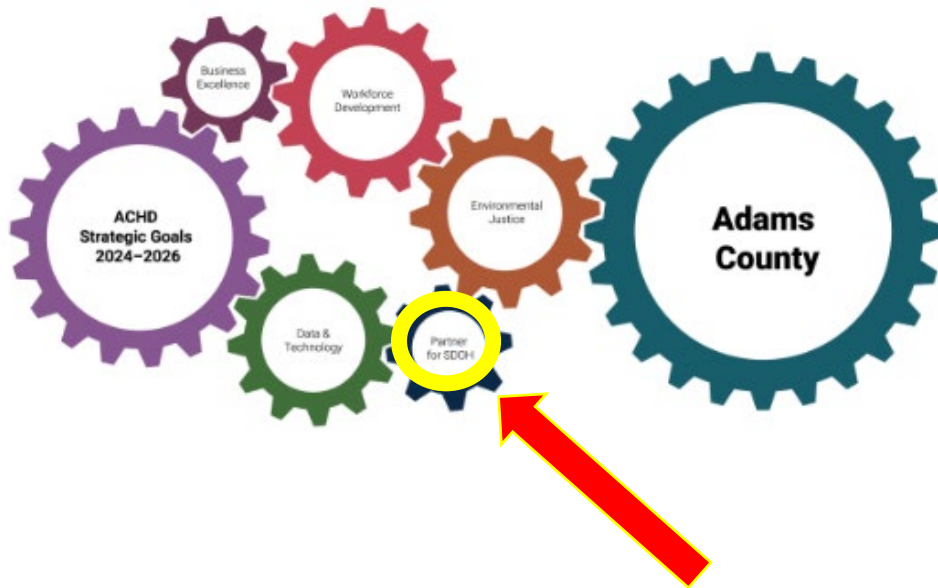
Align ACHD efforts with the Community Health Improvement Plan (CHIP) – specifically applying SDoH efforts via community-led initiatives, aimed at driving key policy, systems, and environmental changes that bolster sustainability and reduce health disparities.

- Identify one CHIP priority area to focus the strategic plan SDoH/engagement goal - Access to Care, Economic Stability or Health and Housing
- Based on existing partnerships and resources, develop a plan and metrics for ACHD - internally addressing selected CHIP priority area
- Evaluate ACHD effectiveness in impacting selected CHIP priority area



Questions?

Strategic Plan



Team Members

Darci	Martinez	Sponsor		
Adam	Anderson	Co-Sponsor		
Alison	Mathis	Obj 1		
Callie	Preheim	Obj 1	Obj 2	Obj 4
Candace	Bray	Obj 2	Obj 3	
Doug	Glenn	Obj 2		
Jackie	Martinez	Obj 2		
Jamie	Rodriguez	Obj 1	Obj 2	Obj 3
Jennifer	Alvarez	Obj 1	Obj 2	
Julia	Brennan	Obj 1	Obj 2	Obj 4
Melanie	Morrison	Obj 1	Obj 2	Obj 3
Natalee	Salcedo	Obj 1	Obj 2	
Raven	Taylor	Obj 1	Obj 2	Obj 3
Samantha	Decker	Obj 1	Obj 2	
Sylvia	Kamau-Small	Obj 1	Obj 2	
Valencia	Bautista	Obj 1	Obj 3	