

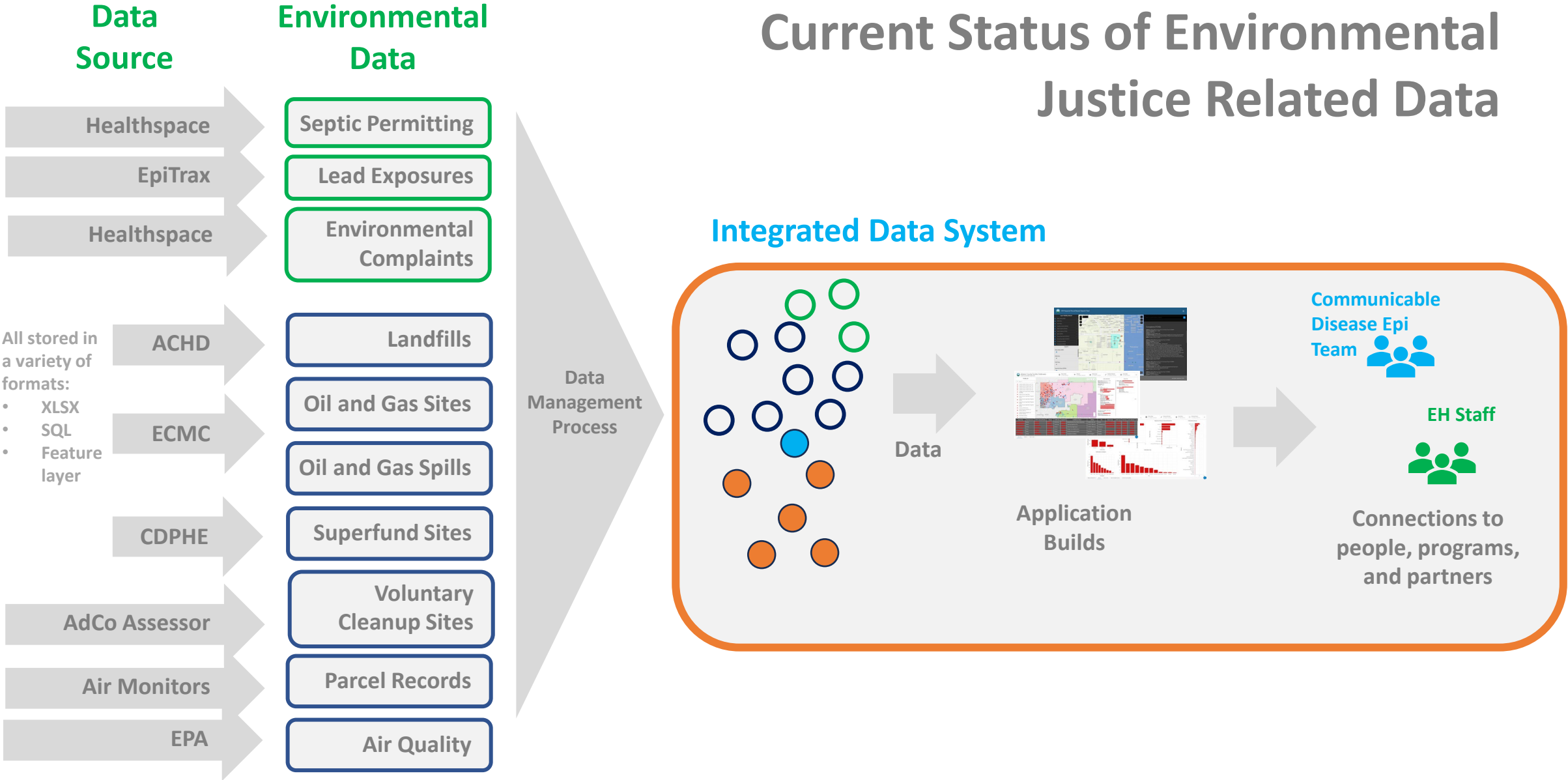
Adams County Health Department

Environmental Justice Data Overview

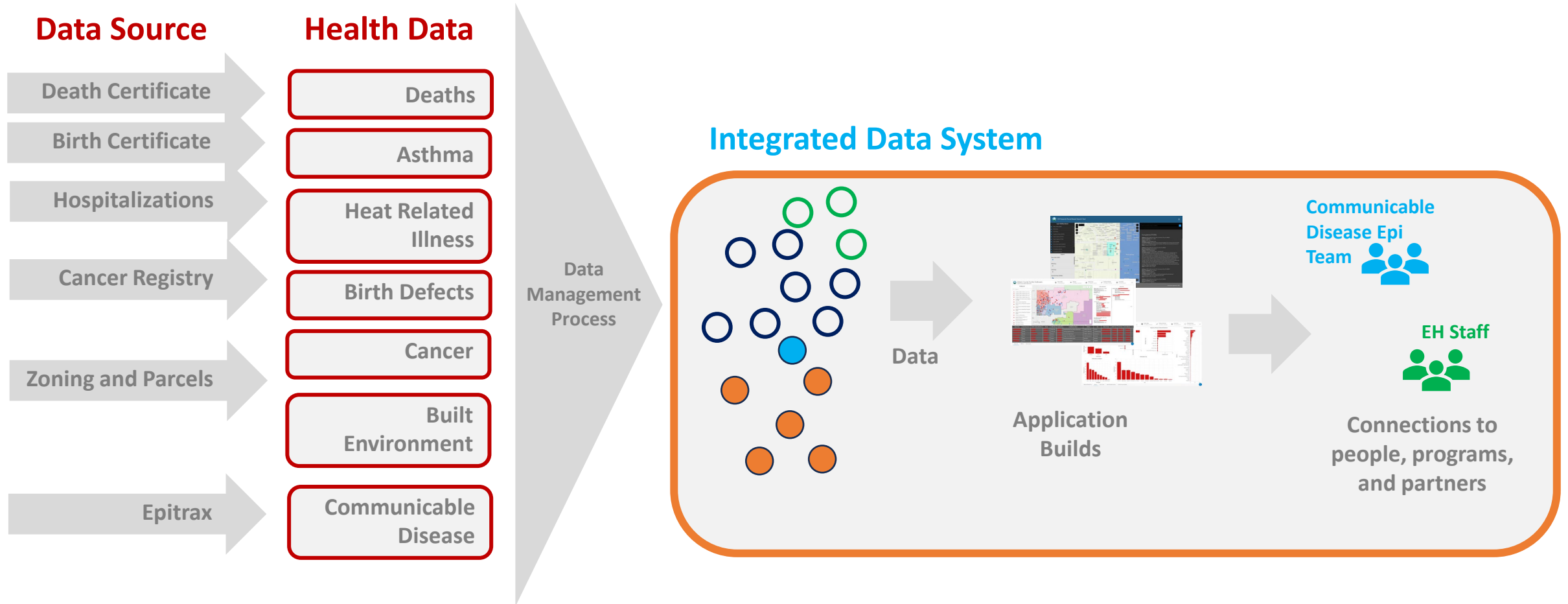
Nov 21, 2024



Current Status of Environmental Justice Related Data



Examples of Environmental Justice Related Health Data



Current Status of Environmental Justice Related Data

Environmental Data

- Septic Permitting
- Lead Exposures
- Environmental Complaints
- Landfills
- Oil and Gas Sites
- Oil and Gas Spills
- Superfund Sites
- Voluntary Cleanup Sites
- Parcel Records
- Air Quality

Health Data

- Deaths
- Asthma
- Heat Related Illness
- Birth Defects
- Cancer
- Built Environment
- Communicable Disease

Data Management Process

Integrated Data System

Tools

Parcel-Based Search Tool

Population Health Dashboard

Environmental Justice Dataset/Dashboards

- Areas of highest exposure to EJ issues
- Communities most vulnerable to EJ issues

Explore Current Environmental Justice Data

Introduction Community Characteristics Environmental Justice Health Indicators Food Access Additional Resources

Census Tract EnviroScreen Rankings

County level rankings can mask real problems or successes people experience in a community. Significant environmental disparities can be seen between communities within Adams County.

[Highest Priority Census Tracts](#) | [Lowest Priority Census Tracts](#)

Explore the map by selecting the navigation bars below to view sub-county enviroscreen data:

EnviroScreen % Score*

Pollution & Climate Burden % Score*

Health & Social Factors % Score*

Source: *Colorado Department of Public Health and Environment, EnviroScreen, 2023

